

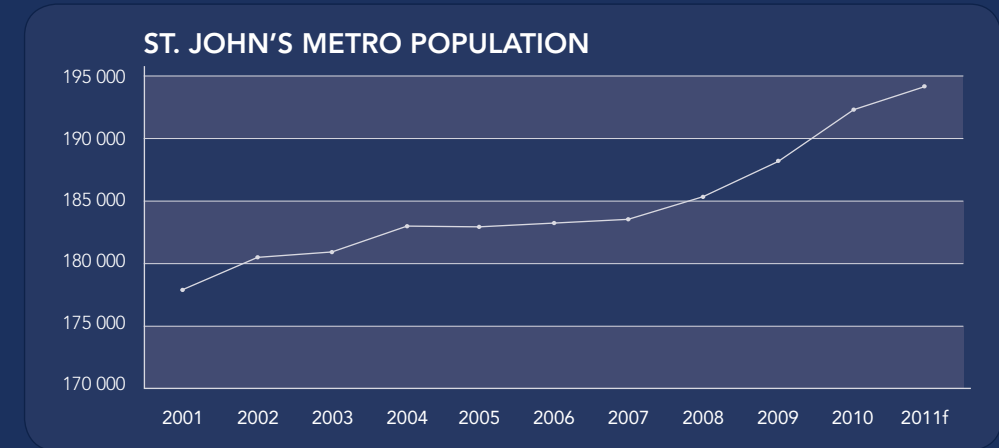
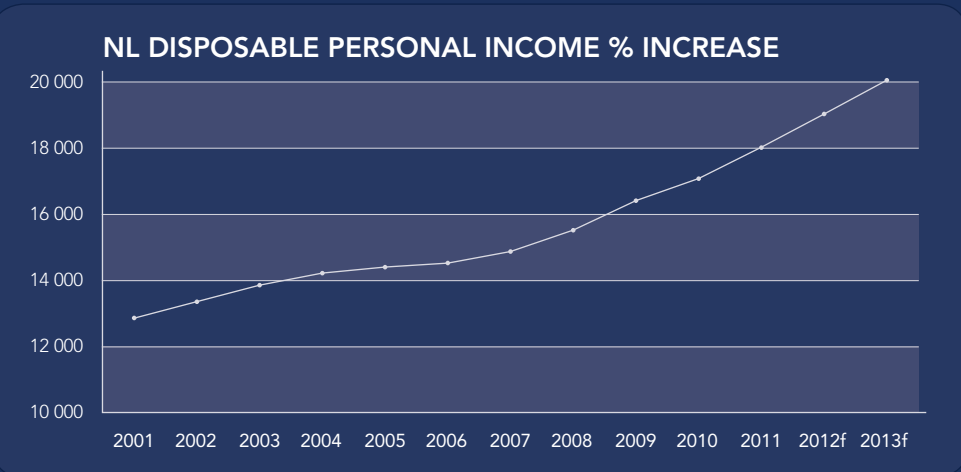
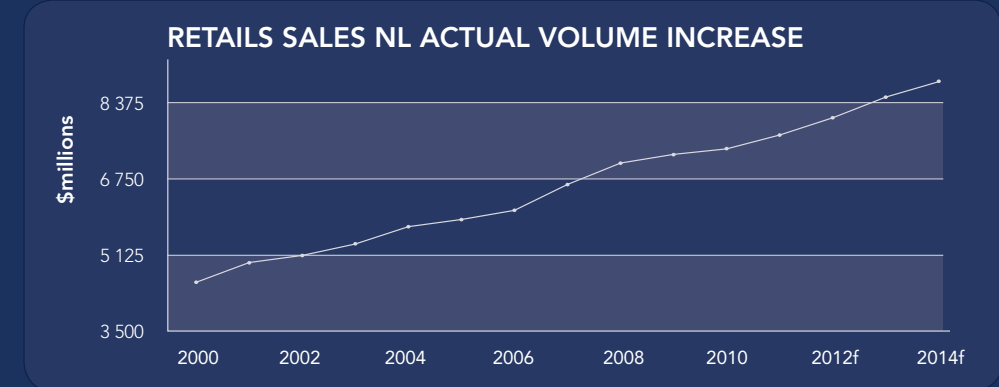
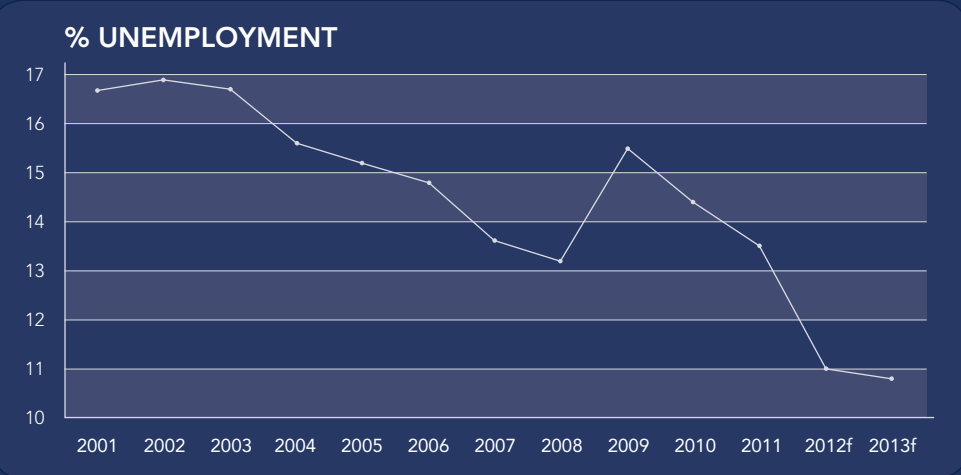
FIELD POWER CENTRE ST. JOHN'S, NEWFOUNDLAND



CANADA'S FASTEST GROWING RETAIL MARKET

NEWFOUNDLAND AND LABRADOR IS POISED TO LEAD ALL PROVINCES IN ECONOMIC GROWTH IN 2011.

Employment and personal income are expected to record steady growth. These trends, combined with high levels of consumer confidence and the projected continuation of net immigration will support the forecasted increase in consumer spending for the foreseeable future.

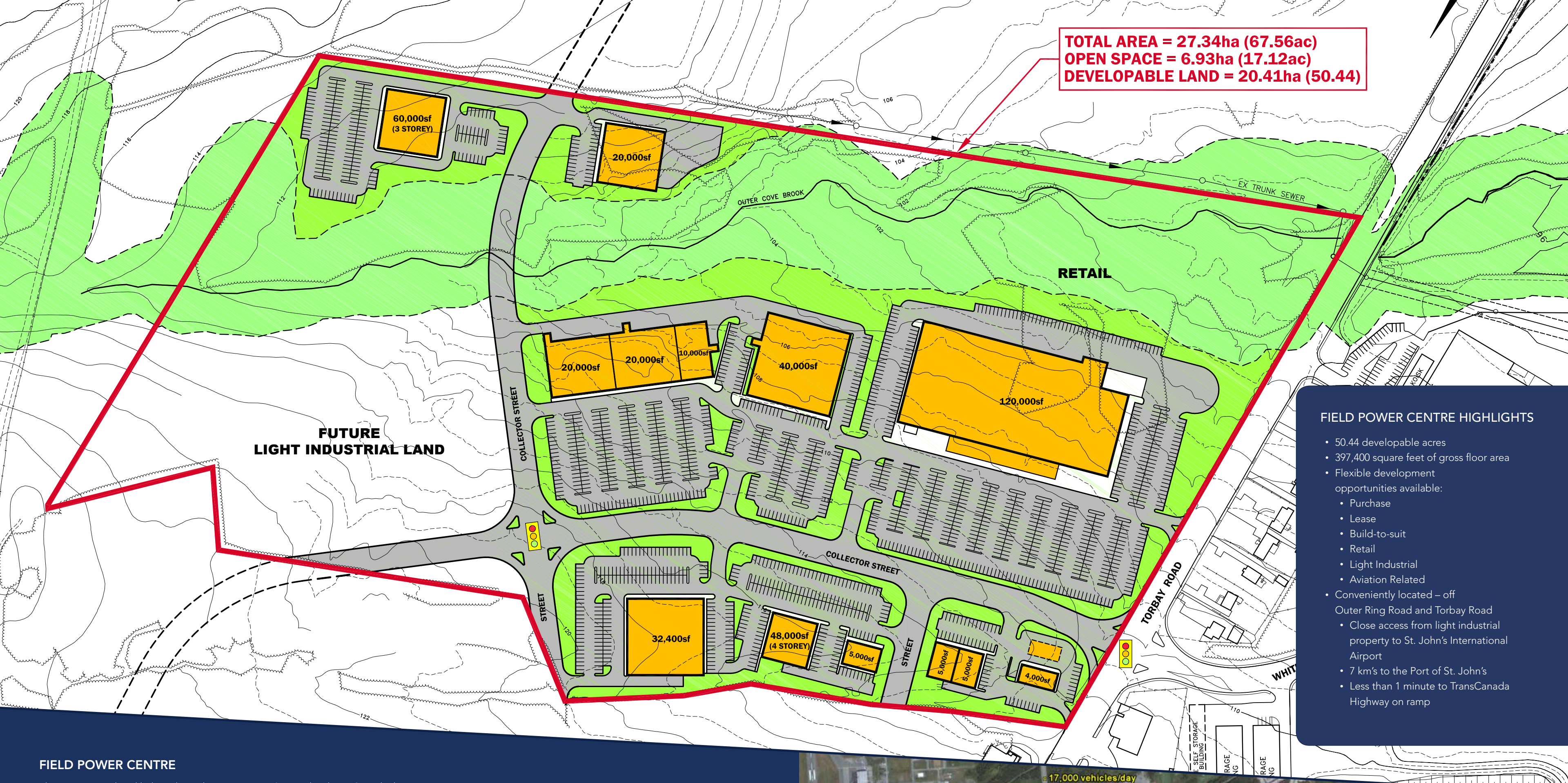


**CALL OR EMAIL TODAY TO LEARN MORE ABOUT
SOUTHLANDS POWER CENTRE SALES AND LEASING**

KEVIN KING, President
mobile 709 682 0073
office 709 754 2057
email kking@kmkcapital.ca

JUSTIN LADHA, Vice-President
mobile 709 690 6556
office 709 754 2057
email jladha@kmkcapital.ca

TOTAL AREA = 27.34ha (67.56ac)
OPEN SPACE = 6.93ha (17.12ac)
DEVELOPABLE LAND = 20.41ha (50.44)



FUTURE LIGHT INDUSTRIAL LAND

RETAIL

FIELD POWER CENTRE HIGHLIGHTS

- 50.44 developable acres
- 397,400 square feet of gross floor area
- Flexible development opportunities available:
 - Purchase
 - Lease
 - Build-to-suit
 - Retail
 - Light Industrial
 - Aviation Related
- Conveniently located – off Outer Ring Road and Torbay Road
- Close access from light industrial property to St. John's International Airport
- 7 km's to the Port of St. John's
- Less than 1 minute to TransCanada Highway on ramp

FIELD POWER CENTRE

The newest retail and light industrial development in St. John's, the Field Power Centre, will comprise an assortment of retail, light industrial and aviation related businesses. Neighbouring, and with quick access to the St. John's International Airport, 7km from the Port of St. John's, 6km to the downtown district, immediate access to the Trans-Canada Highway on ramp, and close proximity to two other power centres and numerous large and expanding residential developments, the Field Power Centre is a unique opportunity for both retailers and light industrial space.

Situated within a City which is experiencing and forecast to sustain a trend of strong economic growth across all sectors, and given its access to the surrounding developments, the Field Power Centre is a unique opportunity for many businesses.

The Field Power Centre has 50.44 developable acres for sale (397,400 square feet of gross floor area), for both retail and light industrial use.

Now Selling. Construction is set to begin in the spring of 2012.

TRAFFIC ACCESS AND FLOW

More than 45,000 vehicles per day move past the Field Power Centre along the Outer Ring Road, Torbay Road and Major's Path.

St. John's is the most populous Census Metropolitan Area in the province, it is the second largest in the Atlantic Provinces after Halifax, with a population of 192,326 and growing. The St. John's CMA includes the neighbouring city of Mount Pearl and eleven other towns, the largest of which are Conception Bay South and Paradise.

